

DESCRIPTION

This page has listings for all of our dual voice coil dash replacement speakers. These speakers provide a stereo mix from your single speaker location. Price is per speaker.

SPECIFICATIONS

MODEL	R-48N	R-410N	R-57N	R-65N	R-69N
Nominal Diameter (inch)	4x8	4x10	5x7	6.5	6x9
Description	3-Way	3-Way	3-Way	2-Way	3-Way
Nominal Impedance	4+4ohm	4+4ohm	4+4ohm	4+4ohm	4+4ohm
Frequency Response (SPL@1w/1m)	65Hz-21kHz	43Hz-21kHz	65Hz-21kHz	52Hz-21kHz	40Hz-21kHz
Sensitivity	87dB	87dB	87dB	87dB	90dB
Power Handling (watts RMS/peak)	60/120	90/160	60/100	50/100	100/200
Speaker Grill	NO	NO	NO	NO	NO
Mounting Depth (inch)	1.7	1.7	1.7	1.7	1.7
Mounting Depth (mm)	44	44	44	44	44

MODEL	D-52	D-62	D-572	D-412
Nominal Diameter (inch)	5.25	6.5	5 x 7	4 x 10
Description	2-Way	2-Way	2-Way	2-Way
Nominal Impedance	4+4ohm	4+4ohm	4+4ohm	4+4ohm
Frequency Response	60Hz-21kHz	50Hz-21kHz	48Hz-21kHz	43Hz-21kHz
Sensitivity (SPL@1w/1m)	87dB	87dB	87dB	87dB
Power Handling (watts RMS/peak)	15/30	15/30	15/30	15/30
Speaker Grill	NO	NO	NO	NO
Mounting Depth (inch)	1.7	2	2	2.3
Mounting Depth (mm)	47	51	51	59

4x8-Inch Premium Ultra-thin Dash Replacement Speaker

Part Number: R-48N



1.37"
Mounting Depth

4x10-Inch Standard Series Dash Replacement Speaker

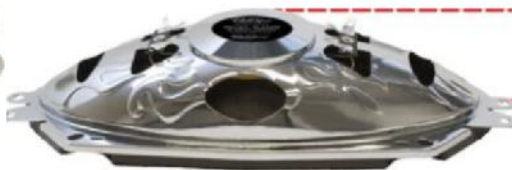
Part Number: D-412



2.3"
Mounting Depth

4x10-Inch Premium Ultra-thin Dash Replacement Speaker

Part Number: R-410N



1.77"
Mounting Depth

5.25-inch Standard Series Dash Replacement Speaker



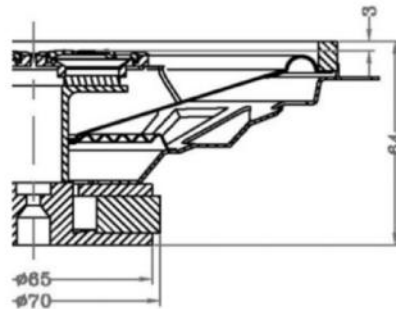
Part Number: D-52



5x7-Inch Standard Series Dash Replacement Speaker



Part Number: D-572



5x7 Inch Premium Ultra-thin Dash Replacement Speaker

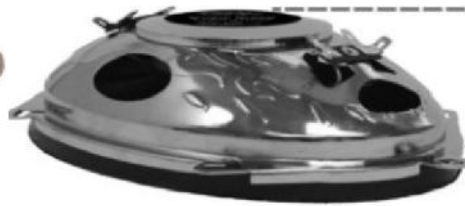


Part Number: R-507N

5x7-Inch Premium Ultra-thin Dash Replacement Speaker



Part Number: R-57N



1.77"
Mounting Depth

6.5-Inch Standard Series Dash Speaker



Part Number: D-62



2.25"
Mounting Depth

6.5-Inch Premium Ultra-thin Dash Speaker



Part Number: R-65N



1.8"
Mounting Depth

6x9-Inch Premium Ultra-thin Dash Speaker



Part Number: R-69N



2.235"
Mounting Depth